

GREENTECH
O2COMMUNITY

*Peaceful
Paradise..!*

Contact Us: + 91 8151945194

Site Location: Wadakpally, Hyderabad

For More Details

Info@sriadityasquares.com

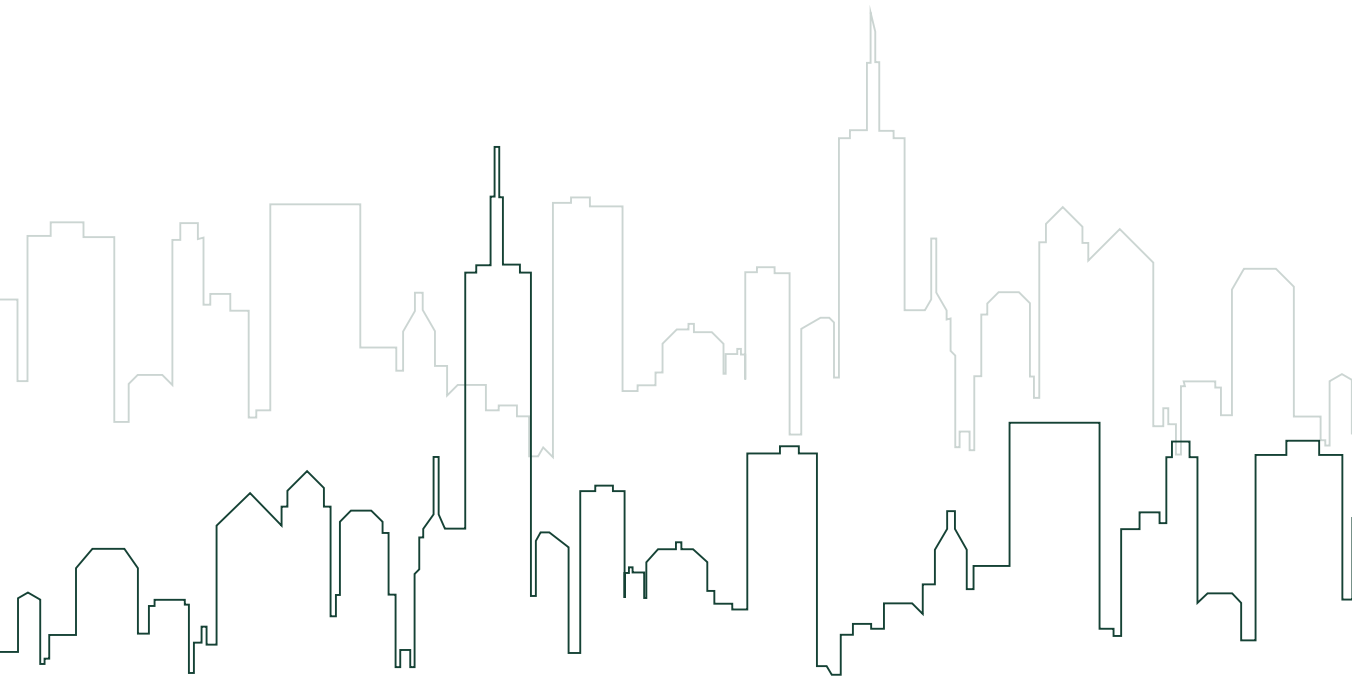


SRI ADITYA SQUARES N



GREENTECH
O2COMMUNITY

An Advance Technology Oriented Villas with
Bio-Logical Elements



GREENTECH
O2COMMUNITY

THE NEW
MOD
DERN

EVIDENT IN THE CITY'S NEW
AND SIGNIFICANT
CONTEMPORARY STRUCTURES



Let the wind carry the whisper from your lips,
let it make true your every wish.

Let your desires be fulfilled at just a glance,
come to where nothing is left to chance.

Come to a paradise that never ceases to amaze,
to live a dream in your very own space.

Come to life in a different dimension,
in the heart of golf course extension.

Come to a home like you have never seen before,
we welcome you to The LUXURY PRADAISE





GREENTECH
O2COMMUNITY

21.18

Acers

luxury villas

sft starts (1901-6288)

Duplex & triplex

274

VILLAS

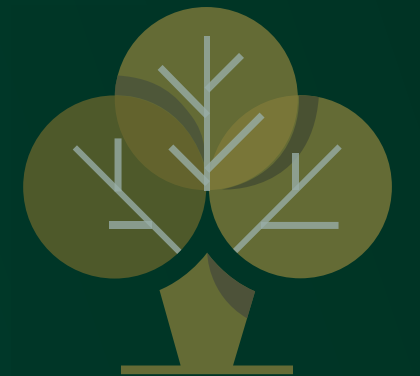


SRI ADITYA SQUARES N



LIVE THE GARNDEUR

Sparwling space that
define luxury and
lavishness.

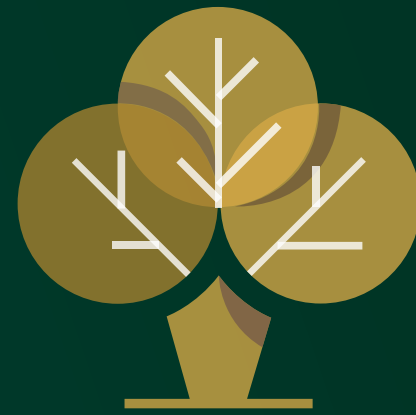




LIVE THE LUXURY

It's not the luxury you get,
but the luxury you deserve





GREENTECH

O2COMMUNITY




SRI ADITYA SQUARES N

AMENITIES

1. Solar Trees for car charging
2. Rain water Storing pots
3. Bird bustop
4. Solar mobile chargers
5. Robo Vaccum cleaner
6. Neted resting zone
7. 40,000sft-Club House
8. Roof top Swimming Pools
9. Aerboic Rooms
10. GYM
11. Spa & Saloon
12. Neted Cricket Court
13. Table tennis
14. Creche
15. Billiards Room
16. Shuttle Court
17. Kids play area
18. Party Hall
19. Co-work space
20. Cafteria
21. Super market
22. Landscape Gardens
23. Senior Citizen walking tracks
24. Amphitheatre
25. Jogging tracks
26. Guest Rooms
27. Open Theater
28. Library
29. Temple
30. Intercoms
31. First Aid Clinic
32. ATM
33. Digital Locking
34. Common area power backup
35. CC Camera in Common area
36. Transport Facility
37. 24x7 Security

Club House

5 Floors
40,000 sft

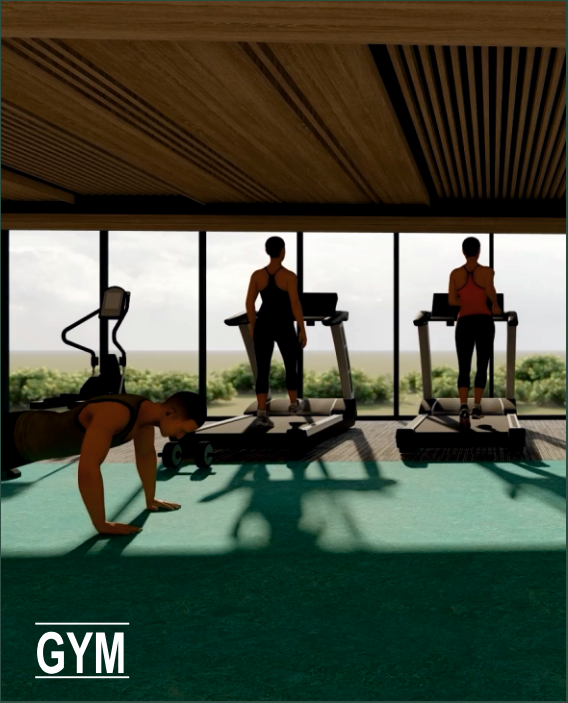




CLUB HOUSE



CHILDREN PARK/WALKING TRACK



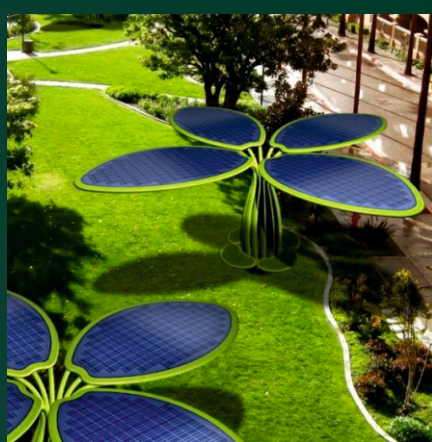
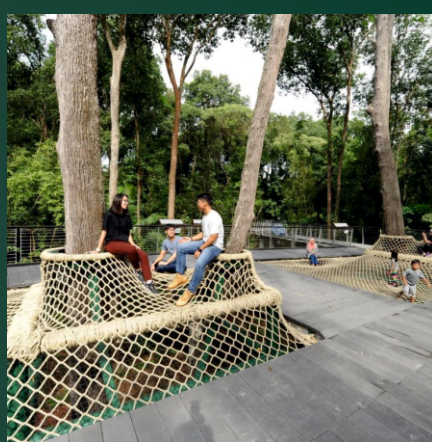
GYM



NETED COURTS



STREET VIEW




Where you have all The Space:

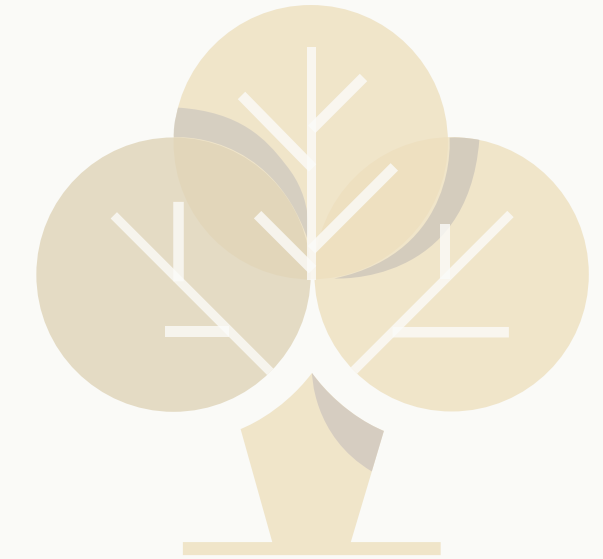


- Solar mobile chargers
- Bird Bustop
- Robo vaccum cleaner
- Digital locking
- Tree Resting Zone
- Rain water storing pits
- Solar Tree For car charging
- Amphitheatre




SRI ADITYA SQUARES N

R
elaxed
efreshed
echarged



Basketball Court
Jogging Trails
Children's Play area
Tennis & cricket Court
Badminton Court
children's play area

165 SQYDS

200 SQYDS

250 SQYDS

300 SQYDS



EAST 165 SEC- FLOOR



EAST 200 SEC-FLOOR



WEST 250 SEC- FLOOR



WEST 300 SEC- FLOOR



EAST 165 FIRST FLOOR



EAST 200 FIRST FLOOR



WEST 250 FIRST FLOOR



WEST 300 FIRST FLOOR



EAST 165 GROUND FLOOR



EAST 200 GROUND FLOOR



WEST 250 GROUND FLOOR



WEST 300 GROUND FLOOR

FLOOR PLANS

TRIPLEX FLOOR PLANS



GREENTECH
O2 COMMUNITY

*Above floor plans are representation purpose only actual plans may vary.

Villa	Facing	Area in sqyds	Area in Sft's
1	North	300	3647
2	North	300	4851
3	North	300	4851
4	North	300	4851
5	North	300	4851
6	North	300	4851
7	North	300	4851
8	North	300	4851
9	North	383	5670
10	East	403	5961
11	East	404	6288
12	East	408	6288
13	East	224	3846
14	East	276	4254
15	West	209	3402
16	West	200	3360
17	West	200	3360
18	West	200	3360
19	West	200	3360
20	West	200	3360
21	West	200	3360
22	West	250	4173
23	East	250	4173
24	East	200	3392
25	East	200	3392
26	East	200	3392
27	East	200	3392
28	East	200	3392
29	East	200	3392
30	East	259	4065
31	West	338	5186
32	West	200	3360
33	West	200	3360
34	West	200	3360
35	West	200	3360
36	West	200	3360
37	West	200	3360
38	West	250	4173
39	East	250	4173
40	East	200	3392
41	East	200	3392
42	East	200	3392
43	East	200	3392
44	East	200	3392
45	East	200	3392
46	East	200	3392
47	East	188	2847
48	West	267	4023
49	West	200	3360
50	West	200	3360
51	West	200	3360
52	West	200	3360
53	West	200	3360

Villa	Facing	Area in sqyds	Area in Sft's
54	West	200	3360
55	West	200	3360
56	West	250	4173
57	East	250	4173
58	East	200	3392
59	East	200	3392
60	East	200	3392
61	East	200	3392
62	East	200	3392
63	East	200	3392
64	East	200	3392
65	East	317	5425
66	West	200	3360
67	West	200	3360
68	West	200	3360
69	West	200	3360
70	West	200	3360
71	West	200	3360
72	West	200	3360
73	West	200	3360
74	West	200	3360
75	West	250	4173
76	East	250	4173
77	East	200	3392
78	East	200	3392
79	East	200	3392
80	East	200	3392
81	East	200	3392
82	East	200	3392
83	East	200	3392
84	East	200	3392
85	East	200	3392
86	West	296	4401
87	West	200	3360
88	West	200	3360
89	West	200	3360
90	West	200	3360
91	West	200	3360
92	West	200	3360
93	West	200	3360
94	West	200	3360
95	West	200	3360
96	West	250	4173
97	East	250	4173
98	East	200	3392
99	East	200	3392
100	East	200	3392
101	East	200	3392
102	East	200	3392
103	East	200	3392
104	East	200	3392
105	East	200	3392
106	East	200	3392

Villa	Facing	Area in sqyds	Area in Sft's
107	East	341	5163
108	West	210	3185
109	West	200	3360
110	West	200	3360
111	West	200	3360
112	West	200	3360
113	West	200	3360
114	West	200	3360
115	West	200	3360
116	West	200	3360
117	West	200	3360
118	West	200	3360
119	West	250	4173
120	West	250	4141
121	West	183	2984
122	West	263	3321
123	East	222	3003
124	East	183	3021
125	East	183	3021
126	East	250	4173
127	East	250	4173
128	East	200	3392
129	East	200	3392
130	East	200	3392
131	East	200	3392
132	East	200	3392
133	East	200	3392
134	East	200	3392
135	East	200	3392
136	East	200	3392
137	East	358	4412
138	West	222	3759
139	West	222	3759
140	West	222	3759
141	West	222	3759
142	West	222	3759
143	West	250	4173
144	West	250	4141
145	West	183	2984
146	West	183	2984
147	West	183	2984
148	West	240	3321
149	East	316	4984
150	East	183	3021
151	East	183	3021
152	East	183	3021
153	East	250	4173
154	East	250	4173
155	East	222	3825
156	East	222	3825
157	East	222	3825
158	East	222	3778
159	East	222	3778

Villa	Facing	Area in sqyds	Area in Sft's
160	West	386	4154
161	West	222	3759
162	West	222	3759
163	West	222	3759
164	West	222	3759
165	West	222	3759
166	West	222	3759
167	West	250	4173
168	West	250	4141
169	West	183	2984
170	West	183	2984
171	West	183	2984
172	West	183	2984
173	West	222	3819
174	East	214	3880
175	East	183	3021
176	East	183	3021
177	East	183	3021
178	East	183	3021
179	East	250	4173
180	East	250	4173
181	East	222	3825
182	East	222	3825
183	East	222	3778
184	East	222	3825
185	East	222	3825
186	East	222	3778
187	East	287	3280
188	West	329	4158
189	West	165	2765
190	West	165	2765
191	West	165	2765
192	West	165	2765
193	West	165	2765
194	West	165	2765
195	West	225	3800
196	West	225	3800
197	West	165	2765
198	West	165	2765
199	West	165	2765
200	West	165	2765
201	West	165	2765
202	West	159	2765
203	East	159	3022
204	East	165	2781
205	East	165	2781
206	East	165	2781
207	East	165	2781
208	East	165	2781
209	East	225	3868
210	East	225	3868
211	East	165	2781
212	East	165	2781

Villa	Facing	Area in sqyds	Area in Sft's
213	East	165	2781
214	East	165	2781
215	East	165	2781
216	East	165	2781
217	East	248	2615
218	West	170	2780
219	West	165	2184
220	West	165	2184
221	West	165	2184
222	West	165	2184
223	West	220	3732
224	West	225	3800
225	West	165	2184
226	West	165	2147
227	West	165	2184
228	West	215	3681
229	East	188	2523
230	East	165	2265
231	East	165	2265
232	East	225	3868
233	East	220	3760
234	East	165	2265
235	East	165	2265
236	East	165	2265
237	East	165	2265
238	East	170	2350
239	West	160	2073
240	West	150	1901
241	West	150	1901
242	West	150	1901
243	West	220	3732
244	West	180	3000
245	West	150	1901
246	West	150	1901
247	West	199	2451
248	East	295	3924
249	East	150	1972
250	East	180	3473
251	East	220	3760
252	East	150	1972
253	East	150	1972
254	East	160	2200
255	West	225	4074
256	West	225	4074
257	West	180	2901
258	West	150	1901
259	West	150	1901
260	East	150	1950
261	East	150	1950
262	East	150	1950
263	East	180	2880
264	West	180	2460
265	West	150	1901

Villa	Facing	Area in sqyds	Area in Sft's
266	West	150	1901
267	West	150	1901
268	West	170	2780
269	West	240	2624
270	East	335	4184
271	East	150	1972
272	East	150	1972
273	East	150	1972
274	East	180	2880



GREENTECH
O2COMMUNITY

AREA SHEET



SRI ADITYA SQUARES N

FRAMED STRUCTURE

RCC framed structure to withstand wind & seismic loads

SUPER STRUCTURE

8"/9" Thick bricks/blocks work for external walls and 4"/5" thick bricks/blocks for internal walls

External

Double coat cement plaster of 12mm thick with smooth finishing

Internal

Cement plastering with 2 coats of lappam finished to zero level

DOORS

Main Door Frame

Best quality Teak wood frame with melamine/ PU finish

Main Door Shutter

40mm Both sides Teak veneer shutter with melamine/PU finish

Internal Door Frame

Best quality hardwood door frame with polish/ paint

Internal Door Shutter

BWP grade both sides 1mm thick laminate

French Doors(If any)

Anodized aluminum/UPVC door frames with performance glass acoustically treated/tinted float glass panelled shutters & designer hardware of best brands

Windows

Anodized aluminum/UPVC door frames with plain/tinted float glass with suitable finishes as per design, provision for mosquito mesh track

PAINTING

External

Textured finish & two coats of exterior emulsion paint with architectural features

Internal

Smooth finish with two coats of premium acrylic emulsion paint of best brands over a coat of primer

FLOORING

Living & Dining

Double charged vitrified tiles

Bathrooms

Anti-skid ceramic tiles

Corridors

Granite/marble/SVGT tiles

Living Balconies

Anti-skid vitrified/ceramic tiles

Staircase

Granite/marble/Kota stones

TILE CLADDING

Dadoing in kitchen

Glazed ceramic tiles dado up to 2' height above kitchen platform(optional)

Bathrooms

Glazed ceramic tile dado up to full height/ceiling height

Utilities

Rustic vitrified tile of SKGT. Tile dado up to 3' height

KITCHEN

Granite platform with stainless steel sink

Separate Municipal tap (Manjeera or any other water provided by GHMC along with borewell water) Provision for fixing of water RO system, exhaust fan & chimney Provision for geyser for hot water near the sink

ELECTRICAL

Concealed copper wiring(Havells or equivalent)

Power outlets for air-conditioners in all bedrooms

Power outlets for geysers in all bathrooms

Power plugs for cooking range chimney, refrigerators, microwave ovens, mixer/grinders in kitchen, washing machine

Three-phase supply for each unit & individual meter boards

Elegant designer modular electrical switches

Miniature Circuit Breakers(MCB) for each distribution board

Utilities/Wash

Dish washer & washing machine provision in Utility area

BATHROOMS

Vanity type washbasin/countertop in master bedroom EWC with vertical stack flushing system with tic system Single lever fixture with wall mixer cum shower Provision for geysers in all bathrooms All CP fittings are chrome plated

TRULY
INSPIRED
LIVING

TELECOM

Telephone points in master bedroom, living room Intercom facility to all the units connecting Security

CABLE TV

Provision for cable connection in all bedrooms & living room

INTERNET

provision for internet connection in hall through router



POWER BACKUP

Power backup for common area



SRI ADITYA SQUARES N

SPECIFICATIONS

PARKING MANAGEMENT

Entire parking is well designed to suit the number of car parks required Parking

signage and equipment at required place to improve driving comfort

CLUBHOUSE & AMENITIES

Well designed clubhouse with facilities children play equipment, multi-purpose hall, Separate rooms for association, Swimming pool on terrace

WTP & STP

Fully treated water made available through exclusive water softening & purification plants for each unit

A Sewage Treatment Plant of adequate capacity as per norms will be provided inside the project; treated sewage water will be used for landscaping & flushing purposes

The water from the terrace & open areas will be collected through rain water pipes, which will be discharged in rainwater harvesting pots to recharge the ground water

SECURITY/BMS

Sophisticated, round the clock security system

The complete villas shall be provided with Venture Management System with all facilities

Intercom are connected to the Security room

Surveillance cameras at the main Security & Entrance of each block for screening of visitors Solar powered security fence for total compound

Location Map



PLACE NEARBY

Mutangi Junction Exit No-03



Financial District



Neopolis



Gachibowli IT Companies



Sultanpur Medical Hub



Kolluru ORR Exit No-02

- | | |
|-----------|---------------------|
| ⚡ 10 Kms | Gachbowli IT Park |
| ⚡ 8 Kms | Neopolis Kokapet |
| ⚡ 3 Kms | Max Cure Hospital |
| ⚡ 10 Mts | Oakdale campus |
| ⚡ 500 mts | Orr exit no 4 |
| ⚡ 10 mins | Silver Oak School |
| ⚡ 10 mins | Gaudium school |
| ⚡ 5 mins | Medical device park |

